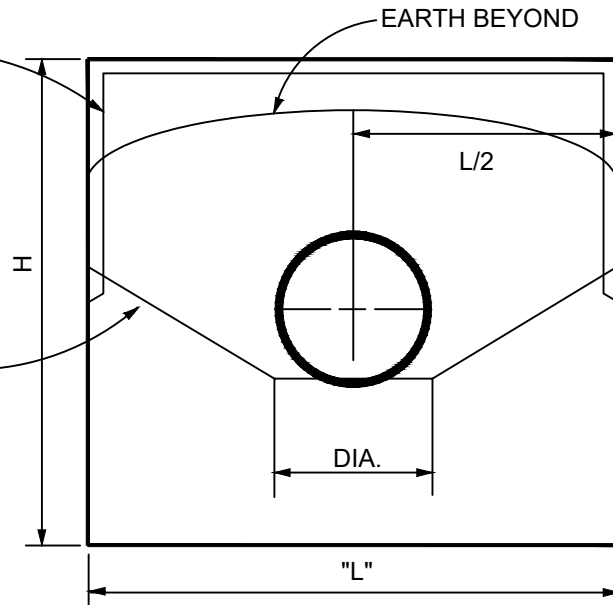


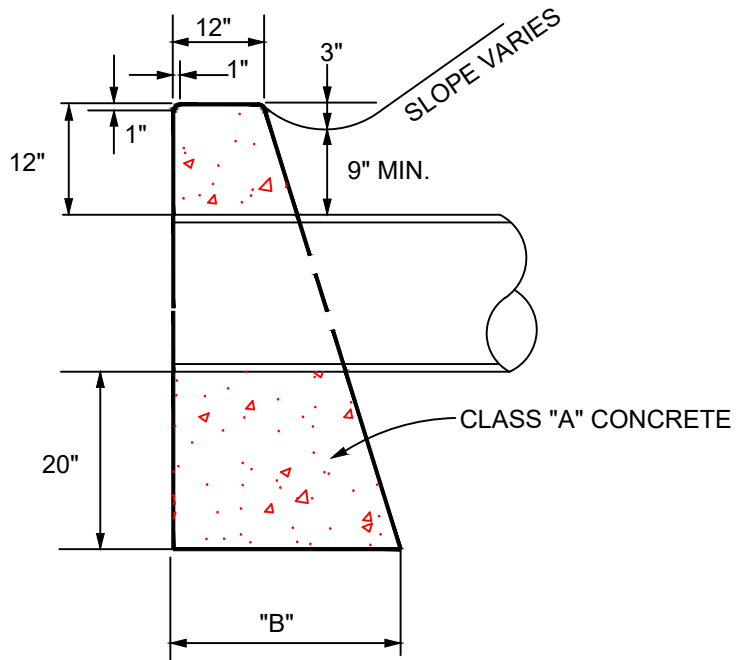
ALL EDGES OF EXPOSED  
SURFACES TO BE CHAMFERED  
ONE INCH

SLOPE SIDES OF DITCH  
TWO TO ONE

## ELEVATION



## SECTION



DIA.	"H"	"B"	"L"
18"	4'-2"	2'-0 1/2"	6'-0"
21"	4'-5"	2'-1 1/4"	7'-0"
24"	4'-8"	2'-2"	8'-0"
30"	5'-2"	2'-3 1/2"	10'-0"



# STRAIGHT ENDWALL FOR CIRCULAR PIPE

NOT TO SCALE

DRAWING NO.

3