

The City of Brentwood has developed a Trail System of Eight marked trails along paved surfaces in Crockett Park, River Park, Tower Park, Split Log Road, Boiling Springs /Ravenwood and surrounding public adjoining these facilities, including the Brentwood Library.

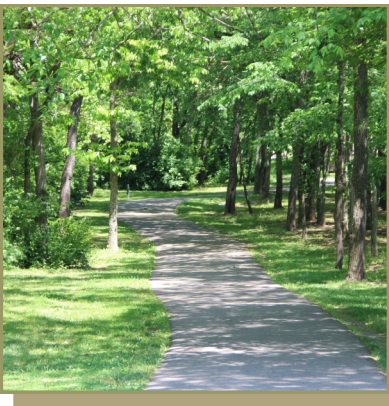


CITY OF BRENTWOOD PARKS & RECREATION
P.O. BOX 788
BRENTWOOD, TN 37024



TRAIL SYSTEM MAP

A COMPLETE GUIDE TO BRENTWOOD PARK’S TRAIL SYSTEM



PROVIDED TO YOU BY THE
CITY OF BRENTWOOD PARKS
& RECREATION
DEPARTMENT

WWW.BRENTWOODTN.GOV

longer routes up to several miles. cated on the map and can be combined to create trails are connected by paved connectors as indi- in length from 1.0 to 10.8 miles. Most of the head for each noted on the map. The trails vary begin and end at the same point with the trail- Ample parking is available near all trails. All trails cated on or near most trails. estrooms and water fountains are lo- neighborhoods. accessible from many of Brentwood's ed on the map. The trails are easily of Brentwood's schools which are not- he trails are also convenient to many

fect for a leisurely stroll. marked points of interest and is per- Little Harpeth River and includes he **red** trail runs along the banks of the Brentwood Library. ball and soccer fields, tennis courts and the Recreation Center, the Martin Center, the base- cilities including the YMCA, Williamson County members or friends may be utilizing the area fa- other areas of the parks to allow use while family difficulty. The trails are incorporated around and roller-blade. The trails vary in length and They provide a great place to walk, jog, run, bike as well as for the exercise enthusiast.

he trails are designed for leisurely enjoyment of the beautiful outdoors he trails are also convenient to many of Brentwood's schools which are not- ed on the map. The trails are easily accessible from many of Brentwood's neighborhoods. Restrooms and water fountains are located on or near most trails. Ample parking is available near all trails. All trails begin and end at the same point with the trail-head for each noted on the map. The trails vary in length from 1.0 to 10.8 miles. Most of the trails are connected by paved connectors as indicated on the map and can be combined to create longer routes up to several miles.

| TRAIL COLORS | | | |
|--------------|------------------------------|-----------|--------------|
| Trail Color | Location | Distance | * Round Trip |
| Black | Crockett Park | 1.4 Miles | RT* |
| Blue | Tower Park | 2.2 Miles | |
| Brown | Split Log Rd | 5.5 Miles | RT* |
| Green | Crockett Park | 2.4 Miles | |
| Orange | Smith Park | 1.4 Miles | RT* |
| Red | River Park/Wilson Pk Tunnel | 2.4 Miles | |
| Tan | Library/Concord Rd | 1.2 Miles | RT* |
| Yellow | Boiling Springs / Ravenswood | 8.2 Miles | |

TRAIL MARKERS



Dial **911** from your cellular device and let dispatch know your location. Be sure to give them the closest trail marker and what section of the trail you are on so they can get you assistance as quickly as possible.



In Case Of
Emergency
Parks & Recreation
Department

- Always walk, skate and ride to the RIGHT, pass on the left.
- Give a SHOUT when passing, "Skater / biker to your LEFT".
- Walkers / Joggers- **First**
- Skaters– **Yield to those on foot**
- Bikers– **Yield to all**

Rules to Right-of - Way

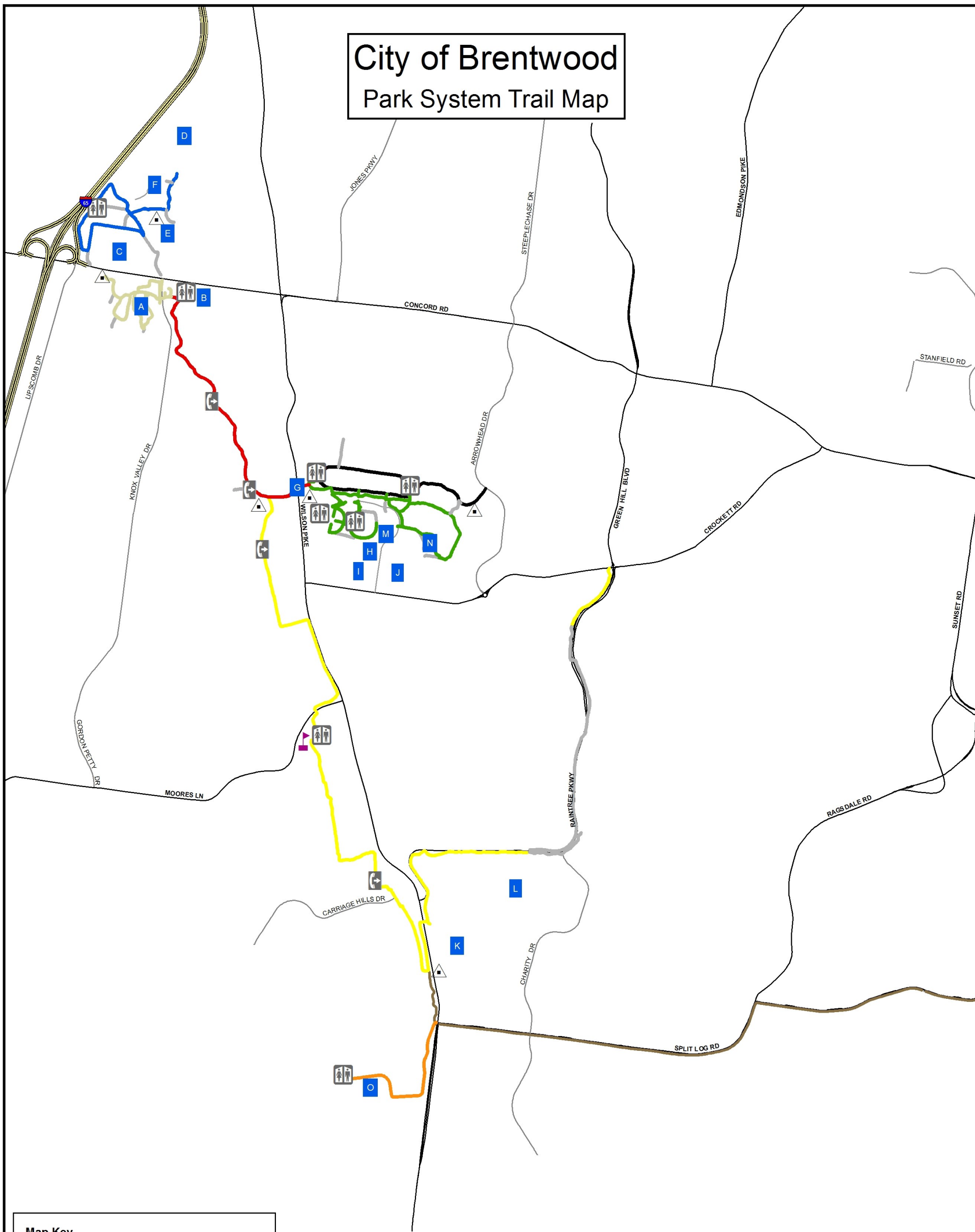
Rules for Walking, Jogging, Skating & Biking on
City Trails

Trail Sense



City of Brentwood

Park System Trail Map



Map Key

- Emergency Call Box
- Restroom
- Boiling Springs Academy
- Trailhead

- Trails**
- Not part of Trail Marker System
 - Black, Crockett Park, 1.4 Miles
 - Blue, Tower Park, 2.2 Miles
 - Brown, Split Log Rd, 5.5 Miles Round Trip
 - Green, Crockett Park, 2.4 Miles
 - Orange, Smith Park, 1.4 Miles Round Trip
 - Red, River Park/Wilson Pike Tunnel, 2.4 Miles Round Trip
 - Tan, Library/Concord Rd, 1.2 Miles
 - Yellow, Boiling Springs/Ravenwood, 8.2 Miles Round Trip

- Streets**
- Arterial
 - Collector
 - Interstate

Other Points of Reference

- A, Brentwood Library
- B, Brentwood YMCA
- C, WSMV Radio Tower
- D, The Heritage At Brentwood
- E, The Martin Center
- F, Williamson County Rec Center
- G, Wilson Pike Tunnel
- H, Woodland Elementary School
- I, Crockett Elementary School
- J, Holy Family Catholic Church
- K, Ravenwood High School
- L, Kenrose Elementary School
- M, Cool Springs House
- N, Indoor Sports Complex
- O, SmithPark/Ravenswood Mansion



Not to Scale

DISCLAIMER

This map/data was created by the City of Brentwood GIS and was compiled from the most authentic information available. The City is not responsible for any errors or omissions contained hereon.

January 17, 2019

